



# WOLFDEN

*Developing one of North America's  
Highest Grade Base Metal Deposits*

This presentation may contain "forward looking information" within the meaning of Canadian securities legislation, which are based on the opinions and estimates of management and are subject to a variety of risks and uncertainties and other factors that could cause actual events or results to differ materially from those projected in the forward looking information. Such risks and uncertainties include, but are not limited to, risks associated with the mining industry, the risk of commodity price and foreign exchange rate fluctuations, the ability of Wolfden to fund the capital and operating expenses necessary to achieve the business objectives of Wolfden, as well as those risks described in public disclosure documents filed by Wolfden. Due to the risks, uncertainties and assumptions inherent in forward-looking information, prospective investors in securities of Wolfden should not place undue reliance on these forward-looking information.

This presentation has been completed by Wolfden. Certain corporate projects referred to herein are subject to agreements with third parties who have not prepared, reviewed nor approved this presentation. The presentation is not intended to reflect the actual plans or exploration and development programs contemplated for such projects.

Donald Hoy, P. Geo., is the Qualified Person for the information contained in this presentation and is a Qualified Person within the meaning of National Instrument 43-101.

For further information on the technical data provided in this presentation, including the key assumptions underlying the mineral resource herein, refer to the Sedar filings as listed below:

Unless otherwise stated, the financial information in this presentation is as reported in the latest quarterly filings or press release related to the financial information of the Corporation.

Pickett Mountain aerial photographs provided courtesy of LandVest



# Corporate Summary



## Capital Structure

<b>Share Price</b>	<b>\$0.25</b>
<b>Shares Outstanding</b>	<b>113.7 M</b>
<b>Warrants and Options</b>	<b>21.0 M</b>
<b>Market Capitalization</b>	<b>\$27.5 M</b>
<b>Cash Aug 13/18 (no debt)</b>	<b>\$2.8 M</b>
<b>Insider Ownership</b>	<b>20.7 M (19%)</b>

## Stock Chart WLF.V

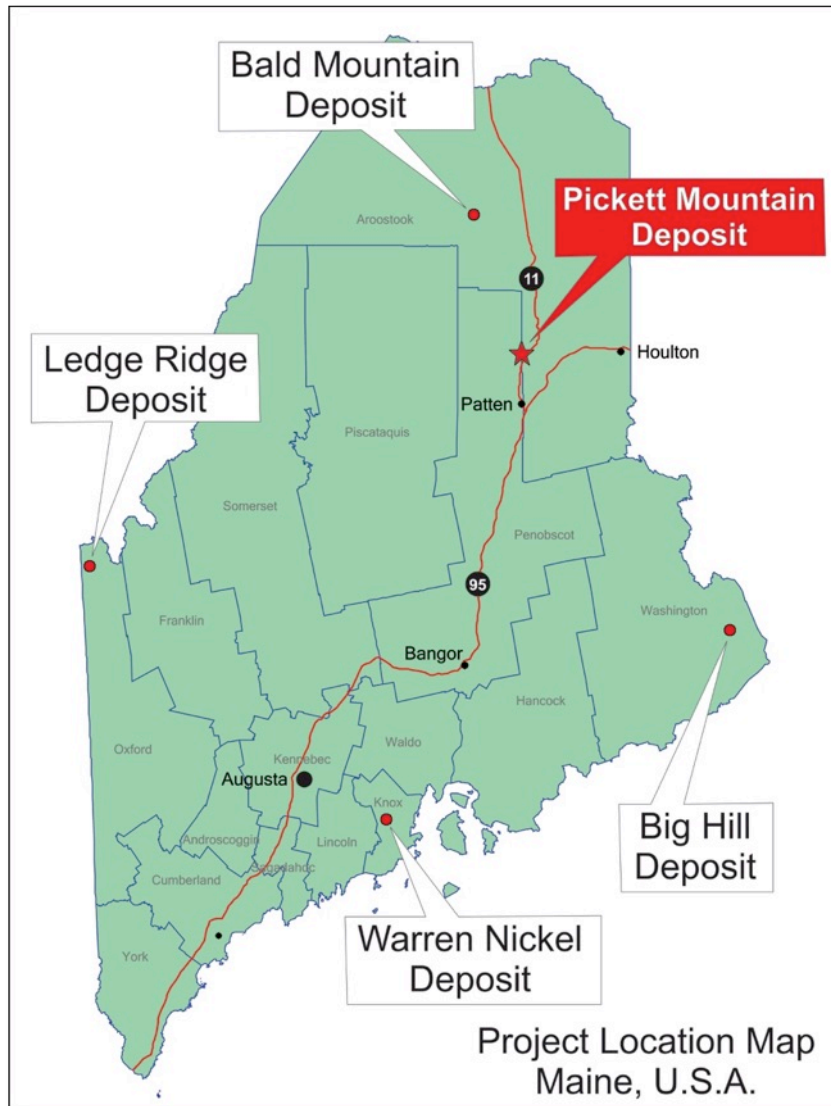


## Proven Team

## Years Experience

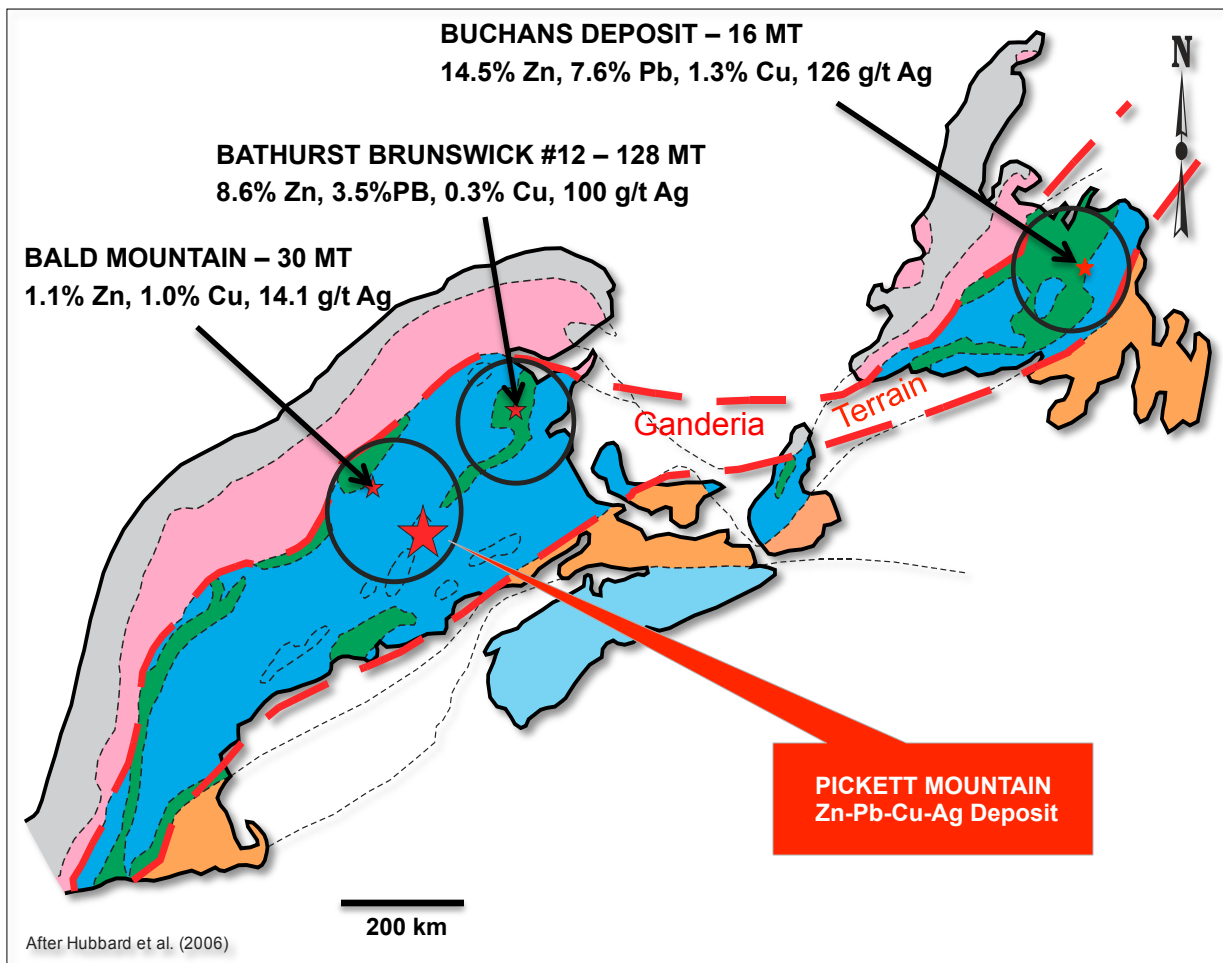
<b>Ewan Downie</b>	Non-Exec Chairman, (CEO Premier Gold Mines)	25
<b>Ron Little</b>	President CEO, Director, (Previously CEO and Founder Orezone)	30
<b>Don Hoy</b>	SVP Exploration, (Previously CEO, SVP Freewest)	35
<b>Don Bubar</b>	Director, (CEO of Avalon)	40
<b>Ian Atkinson</b>	Director, (Previously CEO Centerra)	40
<b>John Seaman</b>	Director, (Previously CFO Premier and Wolfden)	25

# Wolfden First Mover in Maine



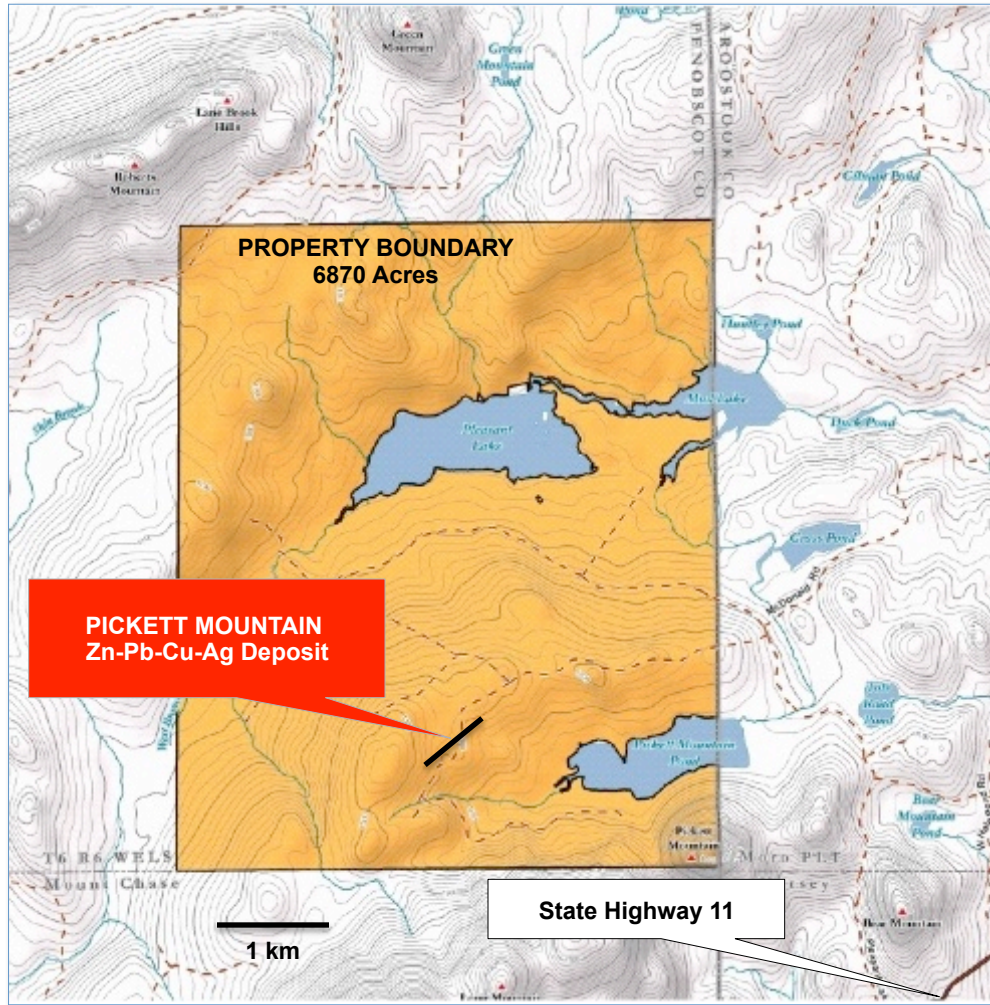
- In 2013, Maine started process to reform mining laws to allow underground mining only
- November 2017 New Mining Code enacted - Bill LD820
- 1980's was the last significant exploration
- **Pickett Mountain is one of the highest-grade undeveloped volcanogenic massive sulphide deposits in North America that remains open for potential expansion**

## Tectonic Map of the Appalachians



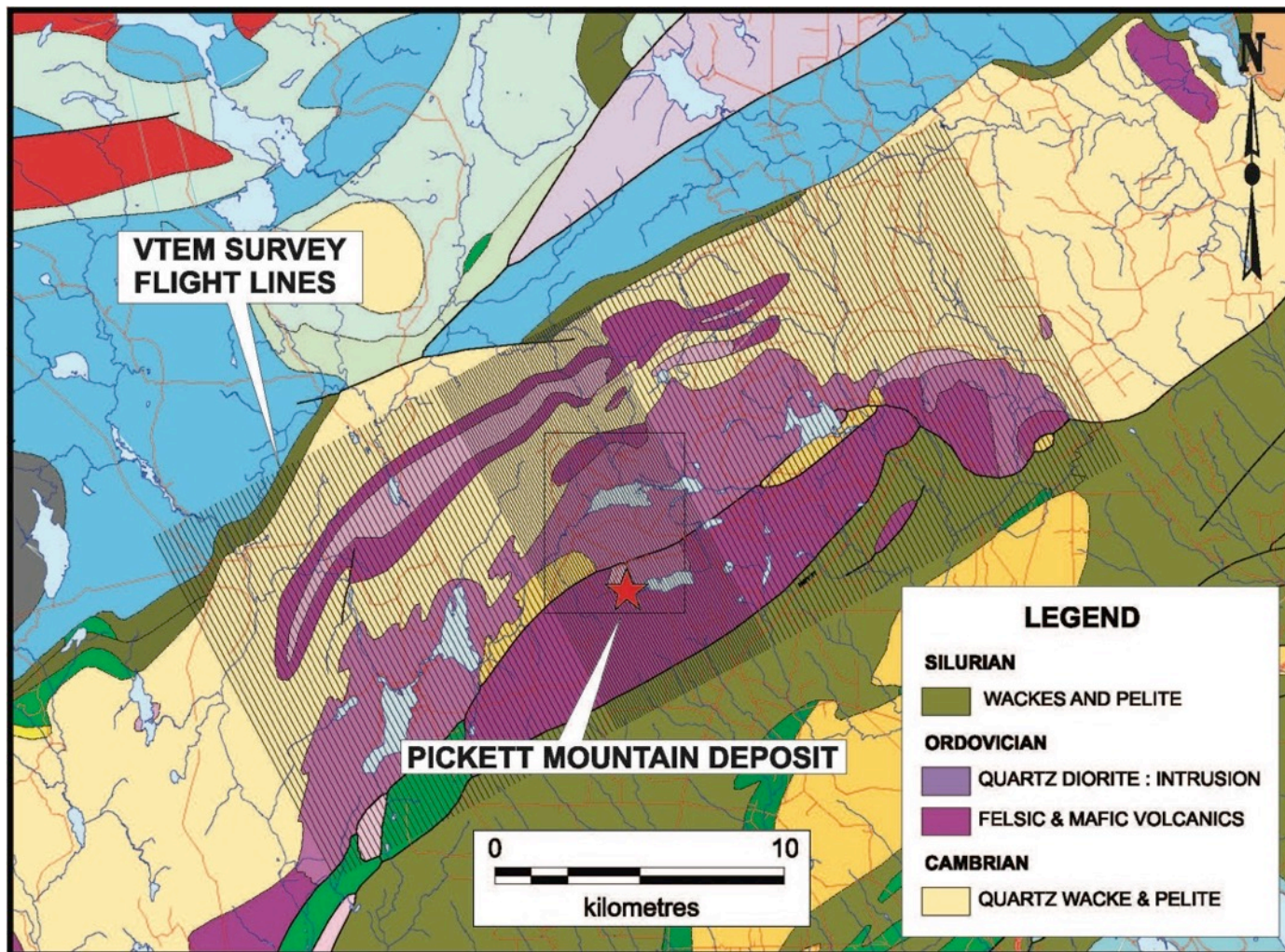
- Ganderia Terrain endowed with high-grade Zn-Pb-Cu-Ag massive sulphide deposits
- **BATHURST CAMP 349 Mt**  
Worlds Largest VMS District  
Production 134 MT
- **BUCHANS CAMP 112 Mt**  
Production 46 MT
- **PICKETT MOUNTAIN**  
Proximal to other camps and very much underexplored
- **New Mining Code in Maine in 2017**

# History, Location & Infrastructure



- Discovered in 1979 by Getty Mines Ltd and called Mount Chase; Diamond drilling, metallurgical work, environmental studies and PF studies 1979 – 1984
- Chevron Ltd.- Deeper drilling, metallurgical work 1984-1989
- Easy year round access via State Highway 11 and three miles of forestry road
- Access to Power Line – 11 km
- No population living within miles of the project
- Timber sales generates some revenue from the Property





Airborne Geophysics completed over the main deposit and the larger grid

Other similar targets targets identified within the same favourable package of rocks

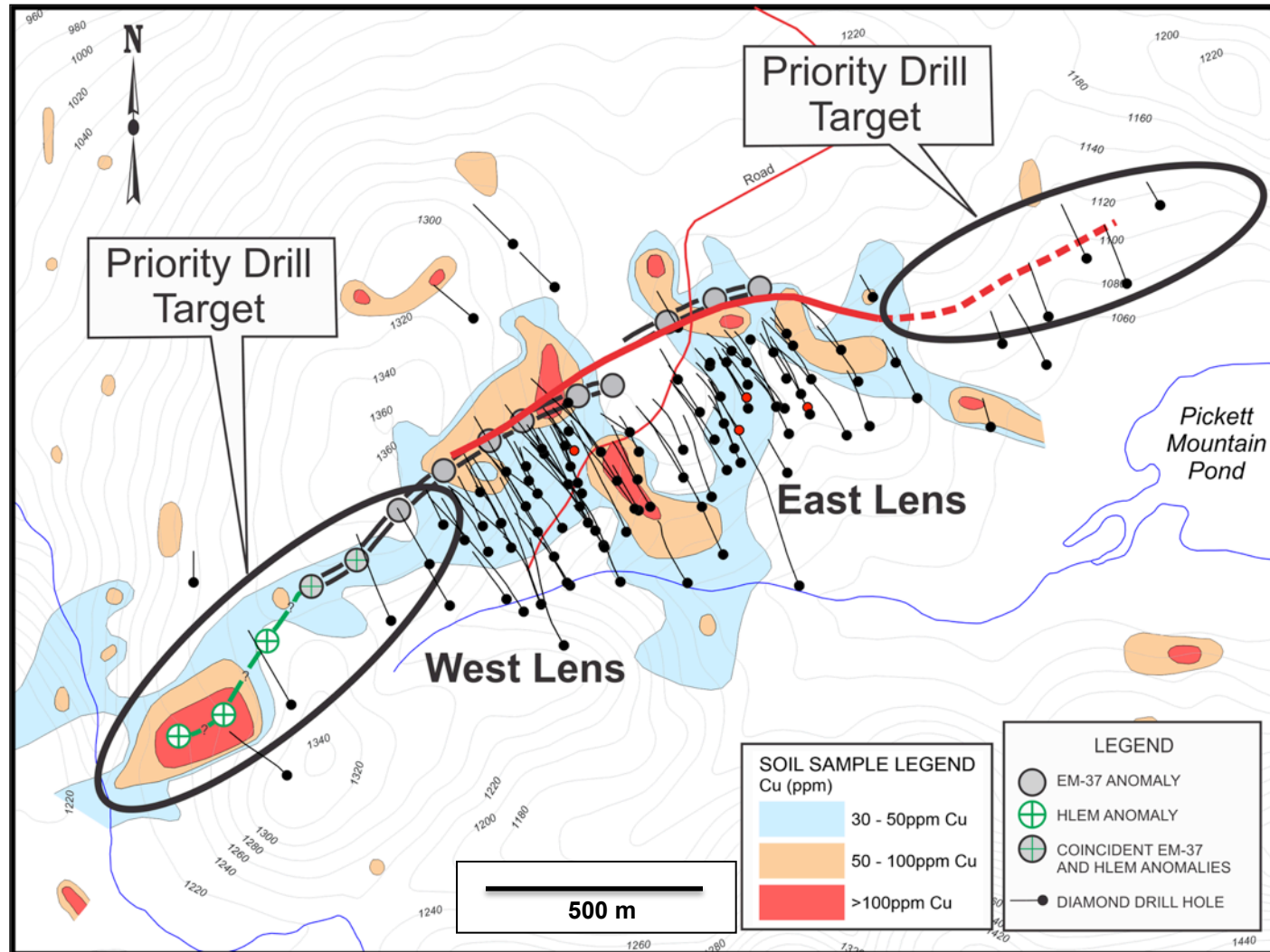
Trenching and drill testing of targets in Q3 and Q4

NI 43-101 resource update expected Q4

# Expansion Potential – Geochemistry/Geophysics



**WOLF DEN**



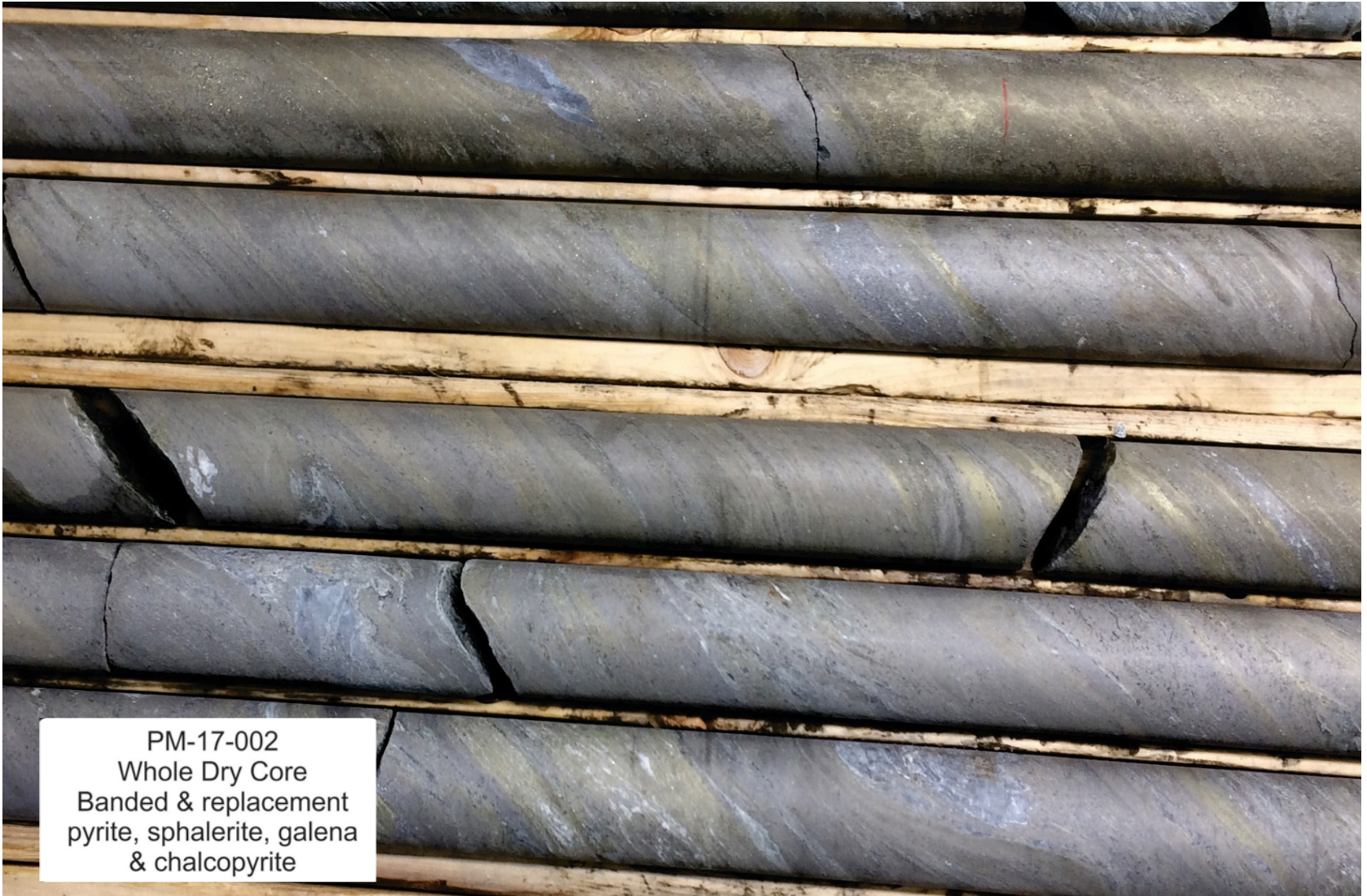
Well defined soil anomalies of Zn-Pb-Cu along strike

Coincident HLEM conductors along strike

No down-hole EM surveying never completed

Drill testing geophysics will follow-up these targets

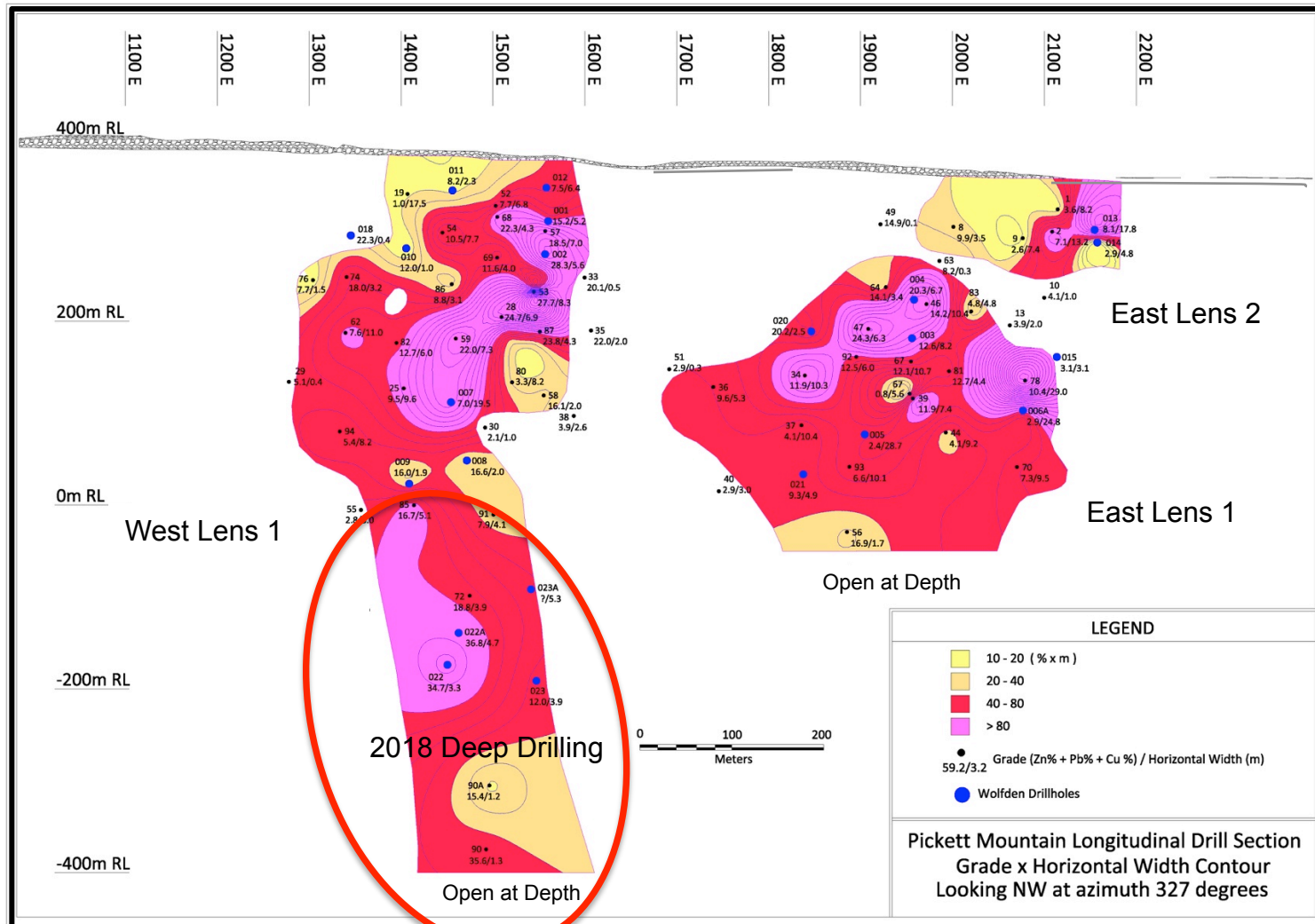




# Vertical Longitudinal Drill Section

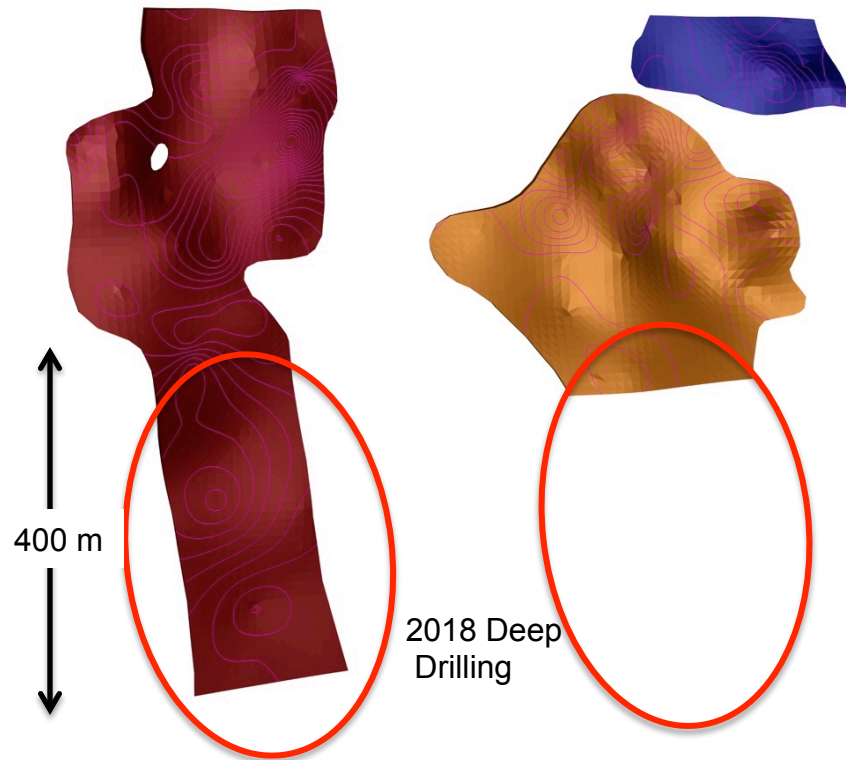


**WOLFDEN**

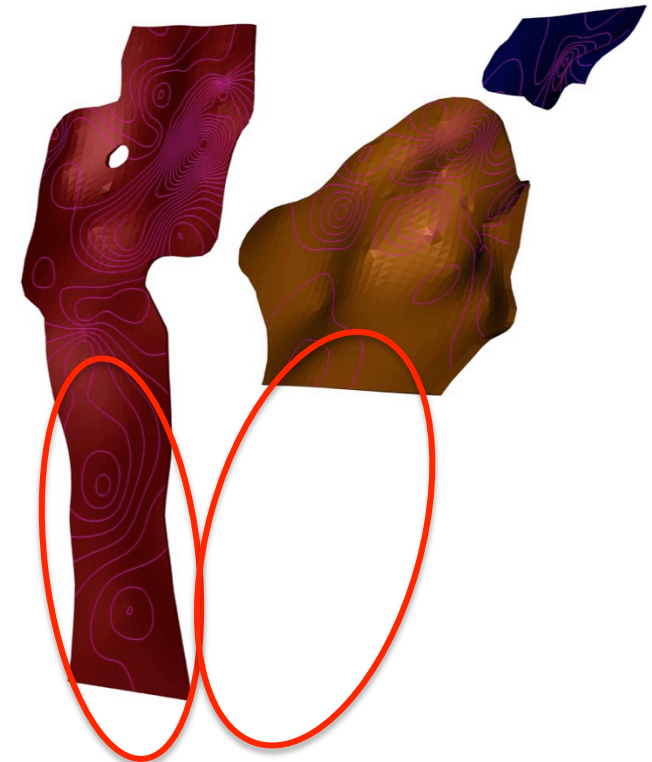




# Isometric View of Main Zone Lenses



Looking NW Azimuth 327  
(Straight on)



Looking WNW Azimuth 282  
(at 45 degrees)



# Mineralized Drill Results – West Lens



Section	Hole #	lens	From (m)	To (m)	length (m)	T.width (m)	Zn %	Pb %	Cu %	Ag g/t	Au g/t	Zn+Pb+Cu total %	(Zn+Pb+Cu)xTw Total %m
1250E	29	West	279.2	279.8	0.6	0.4	3.5	1.3	0.3	8.6	0.3	5.1	2.0
1300E	76	West	162.9	165.5	2.7	2.0	3.2	1.1	3.5	46.6	0.3	7.8	15.5
1350E	55	West	460.0	462.8	2.7	3.0	1.5	0.5	0.8	15.0	0.3	2.8	8.3
1350E	62	West	199.3	221.9	22.7	9.0	4.6	2.4	0.7	34.1	0.6	7.6	68.5
1350E	74	West	158.2	163.2	5.0	5.0	11.7	4.8	1.6	128.1	0.6	18.0	89.9
1350E	94	West	318.0	331.6	13.6	8.0	3.1	1.2	1.1	43.8	0.6	5.4	42.9
1350E	18-018	West	110.1	110.6	0.5	0.4	11.7	8.3	2.3	100.0	0.5	22.3	8.9
1400E	19	West	48.5	74.4	25.9	15.0	0.7	0.2	0.2	4.4	0.0	1.0	15.5
1400E	23	West	197.2	200.6	3.4	2.0	0.0	1.9	2.1	203.8	0.7	4.0	8.0
1400E	25	West	317.0	327.7	10.7	9.0	5.8	2.5	1.3	45.6	0.3	9.5	85.3
1400E	82	West	254.2	259.1	4.9	4.0	7.3	2.9	2.6	105.0	0.9	12.8	51.0
1400E	85	West	398.5	409.4	10.8	6.0	10.3	4.7	1.8	95.6	0.9	16.8	100.9
1400E	18-010	West	124.2	126.0	1.8	1.3	8.7	2.9	0.5	58.1	0.4	12.1	15.7
1450E	54	West	111.6	121.3	9.8	7.0	7.2	2.3	1.1	37.5	0.6	10.5	73.7
1450E	59	West	194.3	217.6	23.3	6.0	13.1	6.4	2.4	110.0	0.9	22.0	131.9
1450E	72	West	525.8	532.5	6.7	4.0	12.5	5.8	0.4	127.5	0.6	18.7	75.0
1450E	86	West	172.2	176.8	4.6	3.0	4.6	1.8	2.4	48.8	0.6	8.8	26.4
1450E	18-007	West	279.7	311.2	31.5	25.0	4.4	1.6	1.0	60.5	1.3	7.0	175.7
1450E	18-008	West	342.3	346.0	3.7	2.5	12.8	3.6	0.3	63.9	0.5	16.7	41.6
1450E	18-009	West	380.9	384.4	3.5	2.8	10.6	4.1	1.3	85.2	0.6	16.0	44.8
1450E	18-011	West	56.6	59.6	3.0	2.6	4.2	1.4	2.6	34.3	0.5	8.2	21.3
1450E	18-022	West	662.2	666.9	4.7	2.4	23.9	9.9	0.9	267.3	1.6	34.7	81.6
1450E	18-022A	West	639.4	645.3	5.9	4.7	24.0	11.8	0.9	324.1	1.4	36.7	172.5
1500E	28	West	200.7	210.9	10.2	7.0	16.0	7.4	1.4	164.1	1.9	24.8	173.4
1500E	30	West	342.9	344.0	1.1	1.0	1.2	0.5	0.4	22.5	0.3	2.1	2.1
1500E	52	West	57.8	68.0	10.2	7.0	4.7	1.9	1.1	33.1	0.6	7.7	53.8
1500E	68	West	64.8	73.8	9.0	5.0	15.3	4.9	2.2	52.2	0.9	22.4	112.0
1500E	69	West	89.9	121.6	31.6	7.0	8.1	3.4	1.1	93.8	0.9	12.7	88.8
1500E	80	West	282.2	293.1	10.8	7.0	1.7	1.1	0.6	12.8	0.3	3.3	22.9
1500E	90	West	812.4	814.4	1.9	1.2	25.4	10.7	0.9	129.1	0.9	37.0	44.4
1500E	91	West	431.6	438.3	6.7	4.0	5.2	2.0	0.7	31.9	0.6	7.9	31.7
1500E	90A	West	761.5	763.1	1.7	1.0	10.4	4.0	0.8	74.7	0.6	15.1	15.1
1500E	18-023	West	661.2	667.1	5.9	3.0	7.5	3.2	1.3	64.8	0.7	12.0	36.0
1550E	53	West	156.4	171.8	15.4	9.0	17.0	9.3	1.5	189.7	1.3	27.7	249.7
1550E	57	West	81.4	96.0	14.6	9.0	11.1	5.9	1.6	133.1	0.9	18.5	166.8
1550E	58	West	284.4	292.6	8.2	4.0	4.8	2.1	1.1	120.3	0.6	8.0	32.0
1550E	87	West	215.0	220.7	5.7	4.0	15.5	6.0	2.3	174.7	0.9	23.8	95.2
1550E	17-001	West	85.5	92.2	6.7	5.5	9.1	4.4	1.7	117.4	1.0	15.2	83.8
1550E	17-002	West	111.0	119.7	8.7	5.0	18.4	8.0	1.9	207.1	1.6	28.3	141.5
1550E	18-012	West	39.2	46.9	7.7	5.1	4.6	1.9	1.0	40.5	0.4	7.5	38.3
1600E	33	West	157.9	158.3	0.5	0.3	10.0	9.3	0.8	190.6	0.9	20.1	6.0
1600E	35	West	211.2	215.0	3.8	3.0	14.7	6.5	0.9	90.9	0.9	22.0	66.1
1600E	38	West	327.6	331.6	4.0	3.0	2.3	0.9	0.7	32.4	0.3	3.9	11.6

Note: This table is comprised of selected intervals within each mineralized intersection that reflects optimized grades and widths based on the relative metal prices and cutoff grades that were appropriate at the time (circa 1985). Wolfden will compile a table of all results from the original drill logs and database in order to regenerate its own table of optimized intervals based on current market conditions.

Drill holes in red font (Hole #001-0023) are those drilled by Wolfden for comparison that intersected massive sulphide mineralization.

# Mineralized Drill Results – East Lens

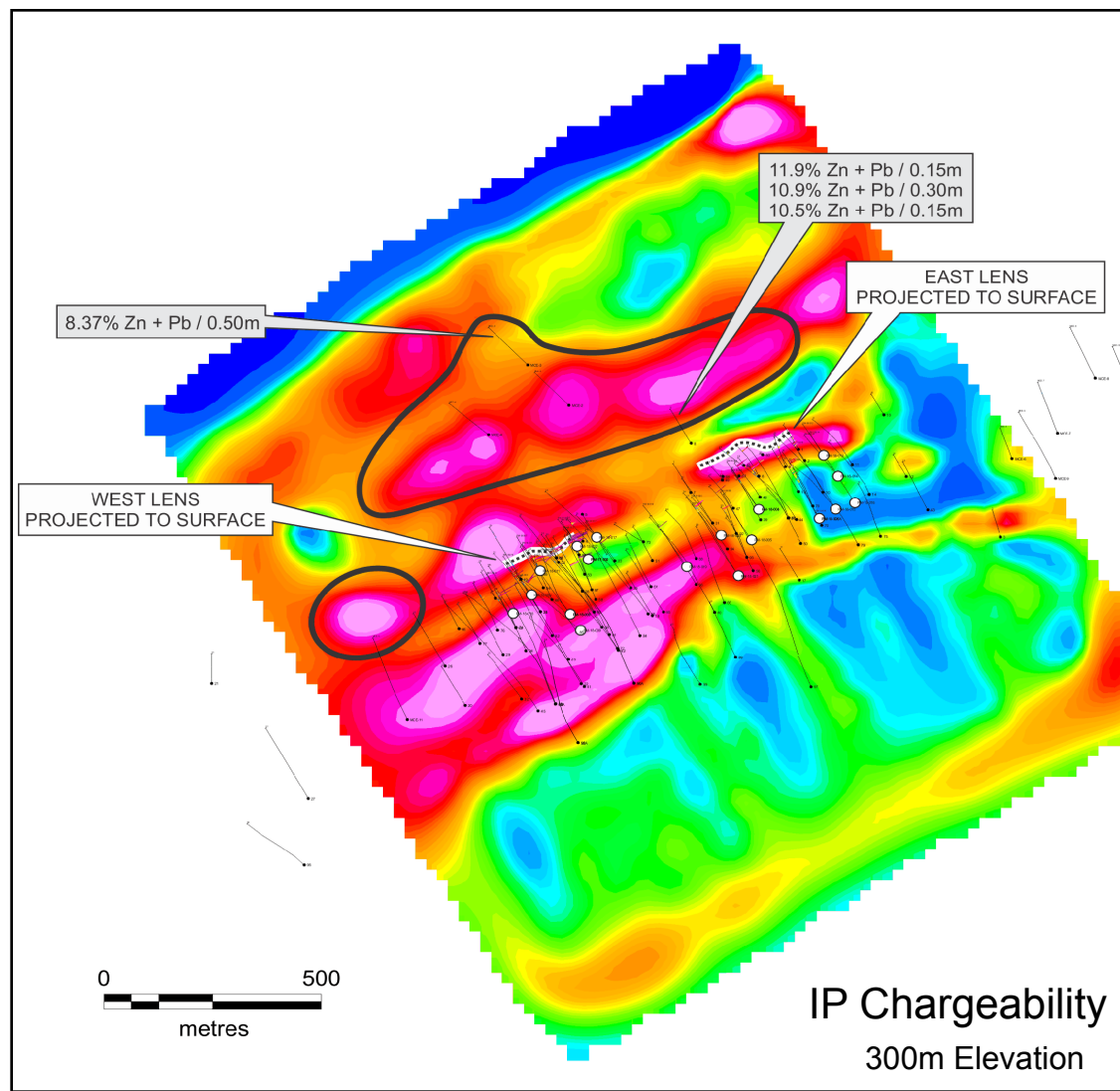


Section	Hole #	Lens	From (m)	To (m)	length (m)	T.width (m)	Zn %	Pb %	Cu %	Ag g/t	Au g/t	Zn+Pb+Cu total %	(Zn+Pb+Cu)xTw Total %m
1700E	51	East	229.5	229.9	0.3	0.3	1.7	0.6	0.6	10.6	1.1	2.9	0.7
1750E	36	East	275.9	282.3	6.4	5.0	6.1	2.5	1.1	57.8	0.4	9.6	48.1
1750E	40	East	385.7	388.9	3.2	3.0	1.5	0.6	0.8	0.0	1.3	2.9	8.7
1850E	34	East	243.8	259.1	15.3	10.0	8.1	3.1	0.8	67.5	0.3	11.9	119.4
1850E	37	East	320.1	332.2	12.1	9.2	2.3	1.0	0.8	56.3	1.3	4.1	37.8
1850E	18-020	East	194.6	197.8	3.2	2.2	13.2	5.4	1.7	124.8	0.6	20.3	44.7
1850E	18-021	East	358.2	362.2	4.0	3.2	6.6	2.3	0.4	22.6	0.6	9.3	29.8
1900E	47	East	181.1	187.6	6.6	4.0	16.9	6.3	1.0	116.9	1.3	24.2	97.0
1900E	49	East	68.3	68.5	0.2	0.1	10.5	2.5	1.9	77.2	0.6	14.9	1.5
1900E	56	East	396.9	398.8	1.9	1.0	12.2	4.2	0.7	89.4	0.6	17.0	17.0
1900E	64	East	118.1	132.1	14.0	6.0	8.9	4.0	1.3	81.6	0.6	14.1	84.7
1900E	92	East	225.3	229.5	4.2	4.0	8.5	3.3	0.9	70.3	0.6	12.7	50.8
1900E	93	East	331.2	343.7	12.4	10.0	4.2	1.5	0.9	70.9	0.6	6.6	66.0
1900E	18-005	East	278.1	323.9	45.8	27.0	1.3	0.5	0.6	24.0	1.0	2.4	65.4
1950E	39	East	260.9	268.7	7.8	6.0	7.4	3.1	1.8	64.7	1.3	12.3	74.0
1950E	46	East	163.7	172.7	9.0	9.0	9.7	3.7	0.8	78.8	0.3	14.2	127.8
1950E	67	East	172.7	234.2	61.6	9.0	7.5	3.4	1.3	50.0	0.3	12.1	109.2
1950E	18-003	East	194.0	202.6	8.6	7.0	10.4	3.8	1.1	63.9	0.9	15.2	106.4
1950E	18-004	East	173.6	180.9	7.3	5.9	13.8	5.1	1.3	144.7	0.3	20.3	119.9
2000E	8	East	89.0	92.7	3.7	3.0	6.2	2.3	1.4	49.4	0.6	9.9	29.7
2000E	44	East	312.0	319.9	7.9	6.0	2.5	1.0	0.5	17.2	0.6	4.1	24.3
2000E	63	East	95.4	95.9	0.5	0.3	5.3	2.4	0.5	27.5	0.6	8.2	2.1
2000E	81	East	248.3	255.6	7.3	5.0	8.1	3.1	1.5	76.6	0.6	12.7	63.6
2000E	83	East	204.4	209.9	5.5	5.0	3.2	1.2	0.4	26.9	0.4	4.8	24.1
2050E	9	East	77.7	85.7	8.1	6.9	2.1	0.3	0.3	18.4	0.0	2.6	18.2
2050E	13	East	183.8	186.5	2.7	2.0	2.6	0.5	0.7	52.8	0.6	3.9	7.8
2050E	70	East	336.8	353.7	16.9	11.0	4.7	1.6	1.0	29.7	0.3	7.3	80.6
2050E	78	East	236.1	253.4	17.3	11.0	6.4	2.6	1.4	56.6	0.4	10.4	114.3
2050E	18-006A	East	254.5	296.9	42.4	29.0	1.7	0.6	0.6	22.8	0.4	2.9	83.8
2100E	1	East	41.2	47.8	6.6	5.9	2.1	0.8	0.7	27.5	0.3	3.6	21.3
2100E	2	East	62.9	76.8	13.9	11.0	4.6	1.7	0.8	41.3	0.6	7.1	78.5
2100E	10	East	169.0	170.1	1.1	1.0	2.5	0.7	0.9	44.1	0.2	4.1	4.3
2100E	18-015	East	229.0	232.6	3.6	3.1	1.8	0.7	0.6	22.8	0.4	3.1	9.6
2150E	18-013	East	70.6	74.0	3.4	1.9	5.2	2.2	0.7	39.4	0.4	8.1	15.4
2150E	18-014	East	87.3	91.7	4.4	3.7	1.8	0.6	0.5	26.2	0.3	2.9	10.7

Note: This table is comprised of selected intervals within each mineralized intersection that reflects optimized grades and widths based on the relative metal prices and cutoff grades that were appropriate at the time (circa 1985). Wolfden will compile a table of all results from the original drill logs and database in order to regenerate its own table of optimized intervals based on current market conditions.

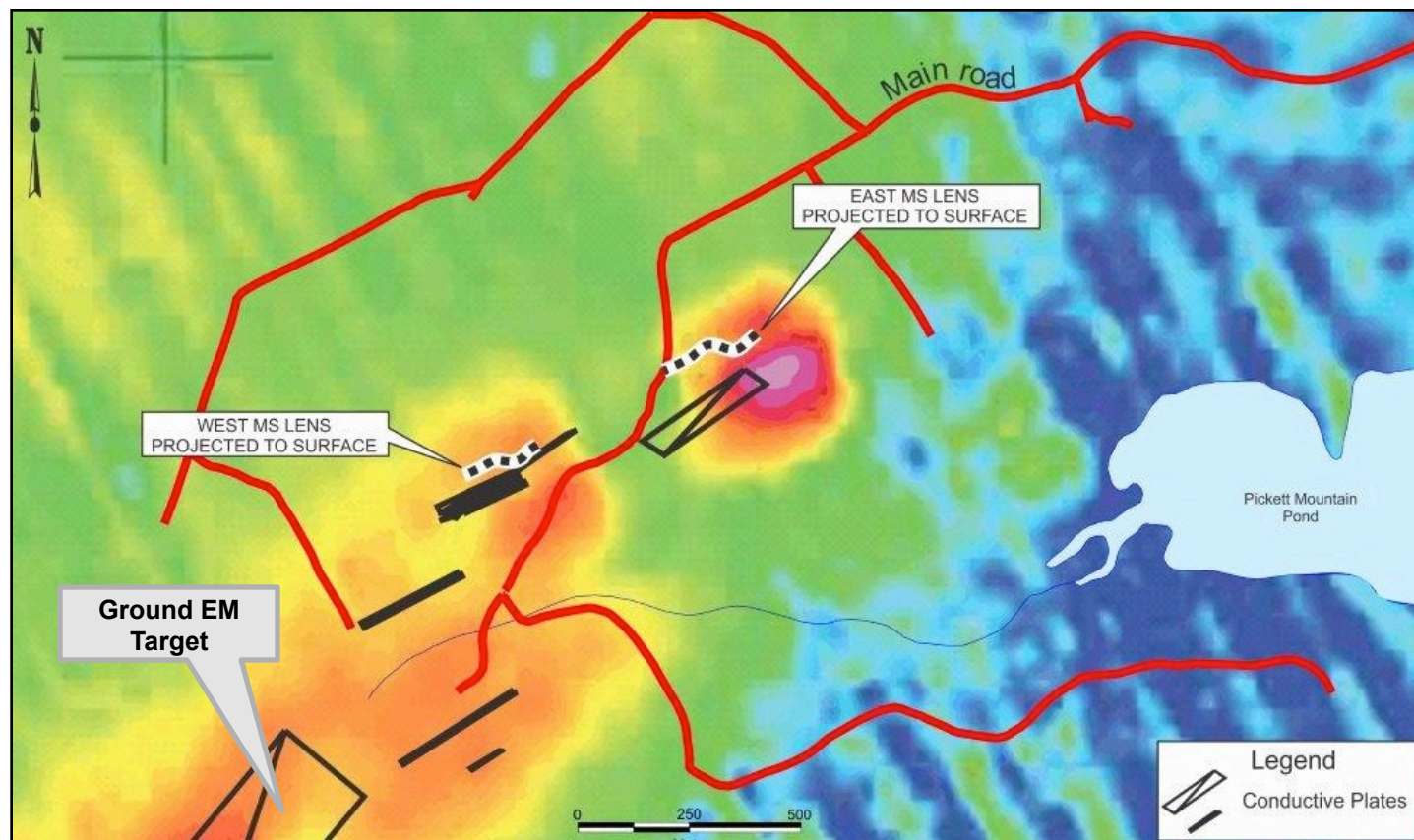
Drill holes in red font (Hole #001-0023) are those drilled by Wolfden for comparison that intersected massive sulphide mineralization.

# Exploration Upside – IP Targets

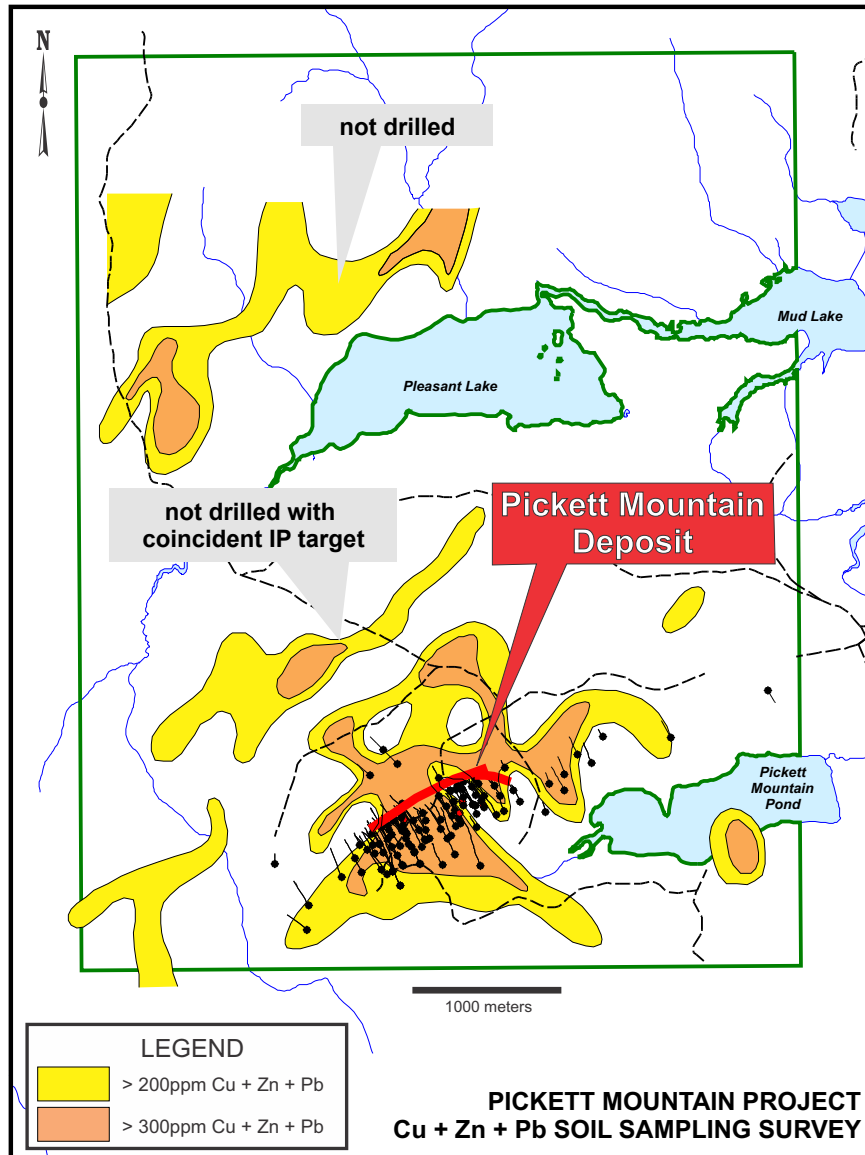


- Main Zone Lens correlate well with high chargeability anomalies
- Other similar anomalies to the North and West will be drill tested as shown in black areas





- Airborne EM Survey identifies East & West lenses as conductors (orange and red contours) and identifies continuous conductive trend to the SW
- Ground EM survey (black lines and rectangles) with higher resolution identifies target 750 metres SW of the West lens at depth of 200m

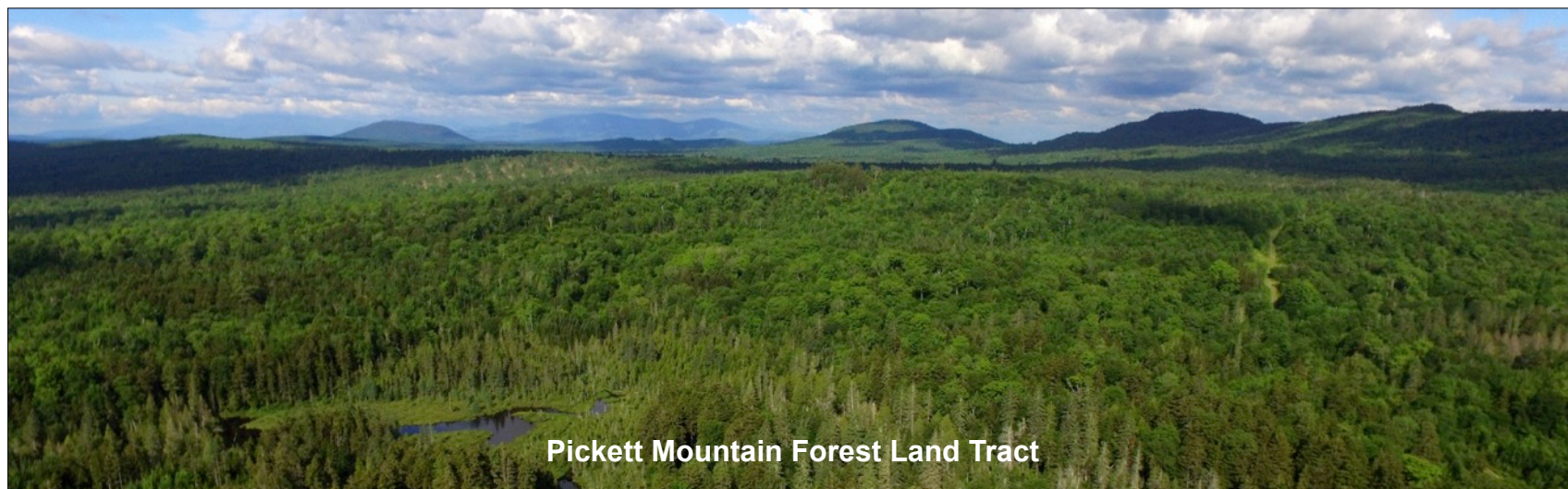


- The East & West lenses of the massive sulphide deposit are coincident with a well-defined Zn +Pb+Cu soil anomaly
- There are 2 soil anomalies located up-ice and to the north of the known deposits that have not been drill tested

# Preliminary Metallurgical Results

PRODUCT	WEIGHT	GRADE					% DISTRIBUTION				
		Cu(%)	Pb(%)	Zn(%)	Au(g/t)	Ag(g/t)	Cu	Pb	Zn	Au	Ag
ORE FEED	100.00	1.60	4.80	12.60	0.94	84.4	100.0	100.0	100.0	100.0	100.0
COPPER CONCENTRATE	5.36	23.10	3.40	2.82	2.31	429.7	77.4	3.8	1.2	13.3	27.3
LEAD CONCENTRATE	7.31	0.35	50.90	8.28	2.63	457.2	1.6	77.5	4.8	20.4	39.6
ZINC CONCENTRATE	20.85	0.86	1.50	53.00	0.56	45.0	11.2	6.5	87.7	12.5	11.1
PLANT TAILINGS	66.48	0.24	0.88	1.19	0.75	27.8	9.8	12.2	6.3	53.8	22.0

- **Preliminary metallurgical work (1984) on drill core produced 3 floatation concentrates with recoveries of 88% Zinc, 78% Lead and 77% Copper**
- These are excellent recoveries in comparison to most volcanogenic massive sulphide deposits in the North American Appalachians



Pickett Mountain Forest Land Tract



- ✓ The Pickett Mountain is one of the highest-grade undeveloped VMS deposits in North America
- ✓ Excellent potential to expand the deposit and discover other lenses and satellite deposits
- ✓ Preliminary metallurgical work yielded recoveries of Zinc (88%), Lead (77%) and Copper (74%) which are excellent for a VMS deposit in the Appalachians
- ✓ The Maine Volcanic Belt neighbours the well endowed Bathurst Camp in New Brunswick
- ✓ Entire Belt is very much underexplored compared to Bathurst
- ✓ 2017 Maine enacts New Mining Laws
- ✓ Local community very supportive on ongoing exploration

## **Pickett Mountain Focus**

- 10,000 m Diamond Drilling Program underway – 6,500 m completed to date in 23 holes;
- Ground trothing of all geophysical targets underway with drilling to follow
- Previous soil anomalies to the North remain untested and will be resampled
- Trenching underway on several targets
- A second drill in Q3 will continue with infill and expansion drilling of Main Zone lenses

## **Other Drill Ready Projects**

- Orvan Brook, New Brunswick – Follow up of recent high-grade drill results in Bathurst Mining Camp planned for Q4
- Rice Island & Nickel Island, Manitoba – high-grade Ni-Cu-Co deposits

## **Evaluate prospective base metal opportunities in North America**

# Contact Details

**Donald Hoy, M.Sc., P. Geo.**  
SVP Exploration  
Tel: 807-624-1131

**Ronald Little, P.Eng**  
President & CEO  
Tel: 613-862-3699

Office Address:  
1100 Russell Street,  
Thunder Bay, ON P7B 5N2

Website: [www.wolfdenresources.com](http://www.wolfdenresources.com)

